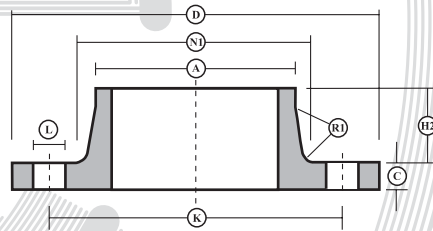


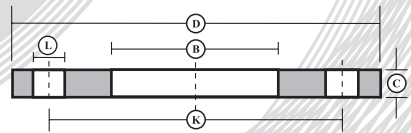
STAINLESS STEEL AND NICKEL ALLOY FLANGES

BS10: 1962

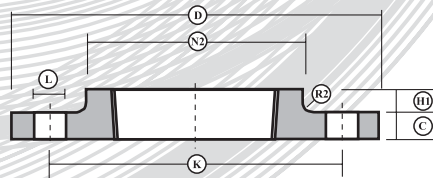




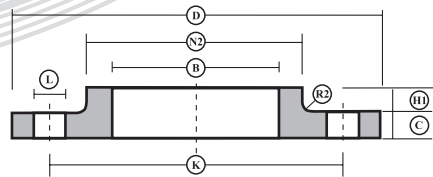
Steel Welding Neck Flange



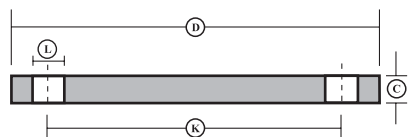
Steel Plate Slip-on Flange



Screwed Boss Flange



Slip-on Boss Flange



Steel Plate Blind Flange

BS10: 1962

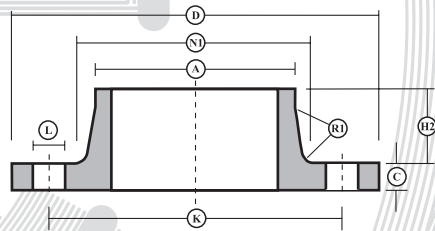
Dimensions of Table D Flanges (in inches)

N B Size	D	K	L	A	C	N1	N2	B	H1	H2	R1	R2	No. Holes
1/2 15	3 3/4	2 5/8	9/16	0.84	3/16	1 1/16	1 5/16	0.88	3/8	7/8	1/4	1/16	4
3/4 20	4	2 7/8	9/16	1.05	3/16	1 5/16	1 1/2	1.09	7/16	7/8	1/4	1/16	4
1 25	4 1/2	3 1/4	9/16	1.32	3/16	1 11/16	1 7/8	1.36	7/16	7/8	1/4	1/16	4
1 1/4 32	4 3/4	3 7/16	9/16	1.66	1/4	1 15/16	2 3/16	1.7	7/16	1	1/4	1/16	4
1 1/2 40	5 1/4	3 7/8	9/16	1.9	1/4	2 5/16	2 7/16	1.95	1/2	1 1/8	1/4	1/16	4
2 50	6	4 1/2	11/16	2.38	5/16	2 3/4	2 15/16	2.44	1/2	1 1/8	1/4	1/16	4
2 1/2 65	6 1/2	5	11/16	2.88	5/16	3 1/4	3 9/16	2.94	5/8	1 1/4	1/4	1/16	4
3 80	7 1/4	5 3/4	11/16	3.5	3/8	4	4 3/16	3.57	5/8	1 3/8	1/4	1/16	4
3 1/2 88	8	6 1/2	11/16	4	3/8	4 1/2	4 11/16	4.07	11/16	1 3/8	1/4	1/16	4
4 100	8 1/2	7	11/16	4.5	3/8	5 1/8	5 1/4	4.57	3/4	1 5/8	3/8	1/8	4
5 125	10	8 1/4	11/16	5.56	1/2	6	6 5/16	5.66	3/4	1 3/4	3/8	1/8	8
6 150	11	9 1/4	11/16	6.63	1/2	7 1/4	7 5/16	6.72	3/4	1 7/8	3/8	1/8	8
8 200	13 1/4	11 1/2	11/16	8.63	1/2	9 1/2	9 1/2	8.72	7/8	2	3/8	1/8	8
10 250	16	14	7/8	10.75	5/8	11 1/2	11 3/4	10.88	1 1/16	2 1/2	3/8	3/16	8
12 300	18	16	7/8	12.75	3/4	13 1/2	13 3/4	12.83	1 1/8	2 3/4	3/8	3/16	12
14 350	20 3/4	18 1/2	1	14	7/8	16	-	14.14	-	2 7/8	3/8	-	12
16 400	22 3/4	20 1/2	1	16	7/8	-	-	16.16	-	-	-	-	12
18 450	25 1/4	23	1	18	1	-	-	18.18	-	-	-	-	12
20 500	27 3/4	25 1/4	1	20	1 1/8	-	-	20.2	-	-	-	-	16
24 600	32 1/2	29 3/4	1 1/8	24	1 1/4	-	-	24.25	-	-	-	-	16

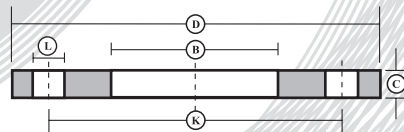
BS10: 1962

Dimensions of Table E Flanges (in inches)

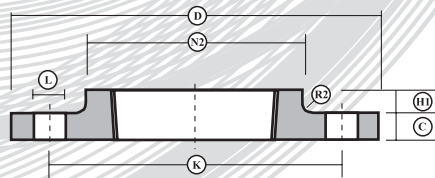
N B Size	D	K	L	A	C	N1	N2	B	H1	H2	R1	R2	No. Holes
1/2 15	3 3/4	2 5/8	9/16	0.84	1/4	1 1/16	1 5/16	0.88	3/8	7/8	1/4	1/16	4
3/4 20	4	2 7/8	9/16	1.05	1/4	1 5/16	1 1/2	1.09	7/16	7/8	1/4	1/16	4
1 25	4 1/2	3 1/4	9/16	1.32	9/32	1 11/16	1 7/8	1.36	7/16	7/8	1/4	1/16	4
1 1/4 32	4 3/4	3 7/16	9/16	1.66	5/16	1 15/16	2 3/16	1.7	7/16	1	1/4	1/16	4
1 1/2 40	5 1/4	3 7/8	9/16	1.9	11/32	2 5/16	2 7/16	1.95	1/2	1 1/8	1/4	1/16	4
2 50	6	4 1/2	11/16	2.38	3/8	2 3/4	2 15/16	2.44	1/2	1 1/8	1/4	1/16	4
2 1/2 65	6 1/2	5	11/16	2.88	13/32	3 1/4	3 9/16	2.94	5/8	1 1/4	1/4	1/16	4
3 80	7 1/4	5 3/4	11/16	3.5	7/16	4	4 3/16	3.57	5/8	1 3/8	1/4	1/16	4
3 1/2 88	8	6 1/2	11/16	4	15/32	4 1/2	4 11/16	4.07	11/16	1 3/8	1/4	1/16	8
4 100	8 1/2	7	11/16	4.5	1/2	5 1/8	5 1/4	4.57	3/4	1 5/8	3/8	1/8	8
5 125	10	8 1/4	11/16	5.56	9/16	6	6 5/16	5.66	3/4	1 3/4	3/8	1/8	8
6 150	11	9 1/4	7/8	6.63	11/16	7 1/4	7 5/16	6.72	3/4	1 7/8	3/8	1/8	8
8 200	13 1/4	11 1/2	7/8	8.63	3/4	9 1/2	9 1/2	8.72	7/8	2	3/8	1/8	8
10 250	16	14	7/8	10.75	7/8	11 1/2	11 3/4	10.88	1 1/16	2 1/2	3/8	3/16	12
12 300	18	16	1	12.75	1	13 1/2	13 3/4	12.83	1 1/8	2 3/4	3/8	3/16	12
14 350	20 3/4	18 1/2	1	14	1 1/8	16	-	14.14	-	2 7/8	3/8	-	12
16 400	22 3/4	20 1/2	1	16	1 1/4	17	-	16.16	-	-	-	-	12
18 450	25 1/4	23	1	18	1 3/8	-	-	18.18	-	-	-	-	16
20 500	27 3/4	25 1/4	1	20	1 1/2	-	-	20.2	-	-	-	-	16
24 600	32 1/2	29 3/4	1 1/4	24	1 7/8	-	-	24.25	-	-	-	-	16



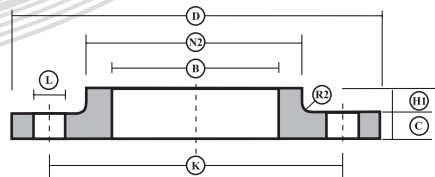
Steel Welding Neck Flange



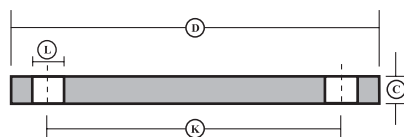
Steel Plate Slip-on Flange



Screwed Boss Flange



Slip-on Boss Flange

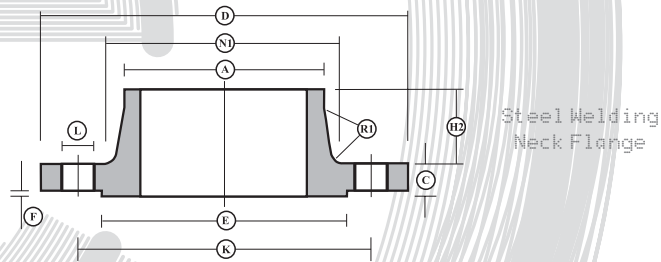


Steel Plate Blind Flange

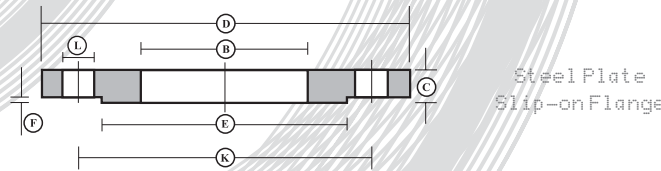
BS10: 1962

Dimensions of Table F Flanges (in inches)

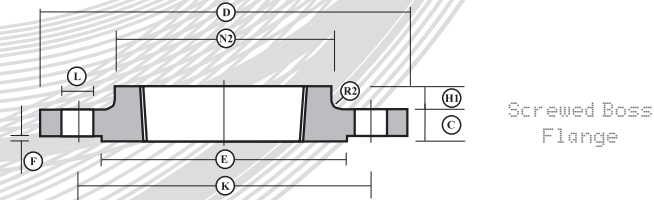
N B Size	D	K	L	A	C	N1	N2	B	H1	H2	R1	R2	No. Holes	
INS	MM													
1/2	15	3 3/4	2 5/8	9/16	0.84	3/8	1 1/16	1 5/16	0.88	3/8	7/8	1/4	1/16	4
3/4	20	4	2 7/8	9/16	1.05	3/8	1 5/16	1 1/2	1.09	7/16	7/8	1/4	1/16	4
1	25	4 3/4	3 7/16	11/16	1.32	3/8	1 11/16	1 7/8	1.36	7/16	1 1/8	1/4	1/16	4
1 1/4	32	5 1/4	3 7/8	11/16	1.66	1/2	2 1/16	2 3/16	1.7	7/16	1 3/8	1/4	1/16	4
1 1/2	40	5 1/2	4 1/8	11/16	1.9	1/2	2 5/16	2 7/16	1.95	1/2	1 3/8	1/4	1/16	4
2	50	6 1/2	5	11/16	2.38	5/8	2 3/4	2 15/16	2.44	1/2	1 3/8	1/4	1/16	4
2 1/2	65	7 1/4	5 3/4	11/16	2.88	5/8	3 3/8	3 9/16	2.94	5/8	1 1/2	1/4	1/16	8
3	80	8	6 1/2	11/16	3.5	5/8	4	4 3/16	3.57	5/8	1 3/4	1/4	1/16	8
3 1/2	88	8 1/2	7	11/16	4	3/4	4 1/2	4 11/16	4.07	11/16	1 3/4	1/4	1/16	8
4	100	9	7 1/2	11/16	4.5	3/4	5 1/8	5 1/4	4.57	3/4	2	3/8	1/8	8
5	125	11	9 1/4	7/8	5.56	7/8	6 1/4	6 5/16	5.66	3/4	2 1/4	3/8	1/8	8
6	150	12	10 1/4	7/8	6.63	7/8	7 1/4	7 5/16	6.72	3/4	2 1/4	3/8	1/8	12
8	200	14 1/2	12 3/4	7/8	8.63	1	9 1/2	9 1/2	8.72	7/8	2 5/8	3/8	1/8	12
10	250	17	15	1	10.75	1 1/8	11 3/4	11 3/4	10.88	1 1/16	2 7/8	3/8	3/16	12
12	300	19 1/4	17 1/4	1	12.75	1 1/4	13 3/8	13 3/4	12.83	1 1/8	3 1/8	3/8	3/16	16
14	350	21 3/4	19 1/2	1 1/8	14	1 3/8	16 1/4	-	14.14	-	3 3/8	3/8	-	16
16	400	24	21 3/4	1 1/8	16	1 5/8	-	-	16.16	-	-	-	-	20
18	450	26 1/2	24	1 1/4	18	1 3/4	-	-	18.18	-	-	-	-	20
20	500	29	26 1/2	1 1/4	20	2	-	-	20.2	-	-	-	-	24
24	600	33 1/2	30 3/4	1 3/8	24	2 1/4	-	-	24.25	-	-	-	-	24



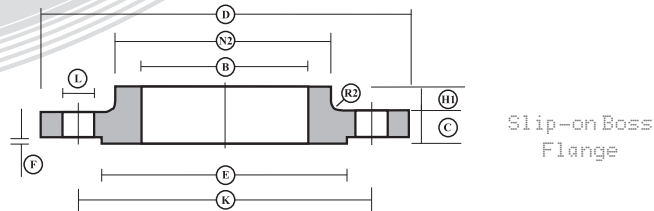
Steel Welding Neck Flange



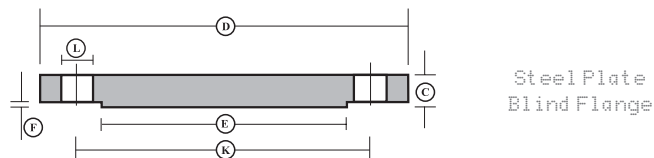
Steel Plate Slip-on Flange



Screwed Boss Flange



Slip-on Boss Flange



Steel Plate Blind Flange

N B Size	D	K	L	A	C	N1	N2	B	H1	H2	R1	R2	E	F	No. Holes	
INS	MM															
1/2	15	4 1/2	3 1/4	11/16	0.84	1/2	1 3/16	1 5/16	0.88	3/8	1 1/8	1/4	1/16	2 1/4	1/16	4
3/4	20	4 1/2	3 1/4	11/16	1.05	1/2	1 3/8	1 1/2	1.09	7/16	1 1/8	1/4	1/16	2 1/4	1/16	4
1	25	4 3/4	3 7/16	11/16	1.32	9/16	1 11/16	1 7/8	1.36	7/16	1 1/8	1/4	1/16	2 1/2	1/16	4
1 1/4	32	5 1/4	3 7/8	11/16	1.66	11/16	2 1/16	2 3/16	1.7	7/16	1 3/8	1/4	1/16	3	1/16	4
1 1/2	40	5 1/2	4 1/8	11/16	1.9	11/16	2 5/16	2 7/16	1.95	1/2	1 3/8	1/4	1/16	3 1/4	1/16	4
2	50	6 1/2	5	11/16	2.38	3/4	2 3/4	2 15/16	2.44	1/2	1 3/8	1/4	1/16	4	1/16	4
2 1/2	65	7 1/4	5 3/4	11/16	2.88	3/4	3 3/8	3 9/16	2.94	5/8	1 1/2	1/4	1/16	4 1/2	1/16	8
3	80	8	6 1/2	11/16	3.5	7/8	4	4 3/16	3.57	5/8	1 3/4	1/4	1/16	5	1/16	8
3 1/2	88	8 1/2	7	11/16	4	7/8	4 1/2	4 11/16	4.07	11/16	1 3/4	1/4	1/16	5 1/2	1/16	8
4	100	9	7 1/2	11/16	4.5	1	5 1/8	5 1/4	4.57	3/4	2	3/8	1/8	6	1/16	8
5	125	11	9 1/4	7/8	5.56	1 1/8	6 1/4	6 5/16	5.66	3/4	2 1/4	3/8	1/8	7	1/16	8
6	150	12	10 1/4	7/8	6.63	1 1/8	7 1/4	7 5/16	6.72	3/4	2 1/4	3/8	1/8	8 1/4	1/16	12
8	200	14 1/2	12 3/4	7/8	8.63	1 1/4	9 1/2	9 1/2	8.72	7/8	2 5/8	3/8	1/8	10 1/4	1/16	12
10	250	17	15	1	10.75	1 3/8	11 3/4	11 3/4	10.88	1 1/16	2 7/8	3/8	3/16	12 1/4	1/16	12
12	300	19 1/4	17 1/4	1	12.75	1 5/8	13 7/8	13 3/4	12.83	1 1/8	3 1/8	3/8	3/16	14 1/4	1/16	16
14	350	21 3/4	19 1/2	1 1/8	14	1 7/8	16 1/4	-	14.14	-	3 3/8	3/8	-	16 1/2	1/16	16
16	400	24	21 3/4	1 1/8	16	2 1/8	-	-	16.16	-	-	-	-	19	1/16	20
18	450	26 1/2	24	1 1/4	18	2 3/8	-	-	18.18	-	-	-	-	21	1/16	20
20	500	29	26 1/2	1 1/4	20	2 5/8	-	-	20.2	-	-	-	-	23 1/2	1/16	24
24	600	33 1/2	30 3/4	1 3/8	24	3	-	-	24.25	-	-	-	-	27 1/2	1/16	24

Address: Evenort Ltd
Houghton Road
North Anston Trading Estate
Sheffield
S25 4JJ

Tel: 01909 569361
Fax: 01909 550631

E-mail: sales@evenort.co.uk
Web: www.evenort.co.uk

Evenort Ltd are
official agents for:

Hilton Metal Forgings Ltd
701 Palm Spring
Link Road
Malad (West)
Mumbai 400 064
India

