

STAINLESS STEEL AND NICKEL ALLOY FLANGES

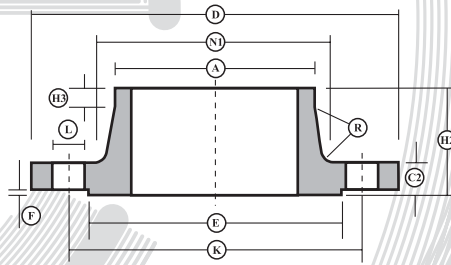
BS4504 :
Section: 3.1:1989



BS4504: Section: 3.1: 1989

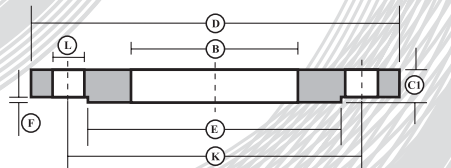
Dimensions of PN2.5 & PN6 Flanges

Code
111



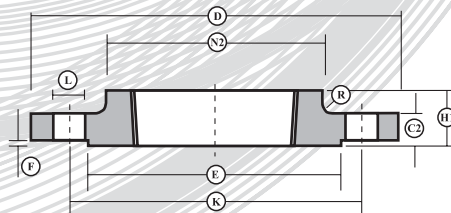
Steel Welding Neck Flange

Code
101



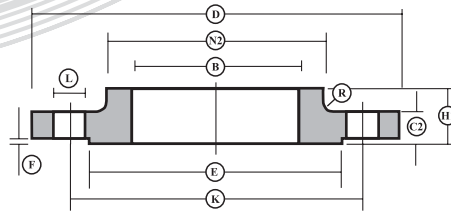
Steel Plate Slip-on Flange

Code
113
(PN6 Only)



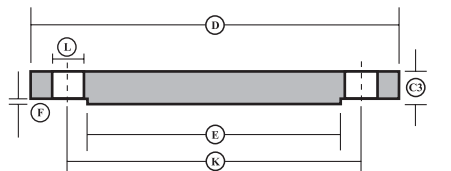
Screwed Boss Flange

Code
112
(PN6 Only)



Slip-on Boss Flange

Code
105



Steel Plate Blind Flange

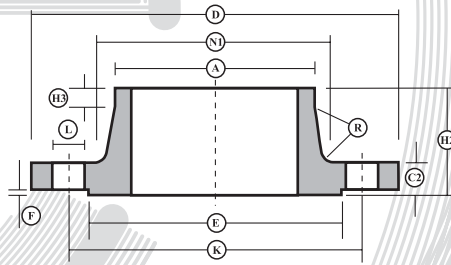
BS4504: Section: 3.1: 1989

Dimensions of PN2.5 & PN6 Flanges

N B Size	D	C1	C2	C3	F	E	B	H1	H2	H3	N1	N2	A	K	R	L	No. Holes
$\frac{3}{8}$ 10	75	12	12	12	2	35	18.2	20	28	6	26	25	17.2	50	3	11	4
$\frac{1}{2}$ 15	80	12	12	12	2	40	22.4	20	30	6	30	30	21.3	55	3	11	4
$\frac{3}{4}$ 20	90	14	14	14	2	50	27.7	24	32	6	38	40	26.9	65	4	11	4
1 25	100	14	14	14	2	60	34.5	24	35	6	42	50	33.7	75	4	11	4
1 $\frac{1}{4}$ 32	120	16	14	14	2	70	43.2	26	35	6	55	60	42.4	90	5	14	4
1 $\frac{1}{2}$ 40	130	16	14	14	3	80	49.5	26	38	7	62	70	48.3	100	5	14	4
2 50	140	16	14	14	3	90	62	28	38	8	74	80	60.3	110	5	14	4
2 $\frac{1}{2}$ 65	160	16	14	14	3	110	74.7	32	38	9	88	100	76.1	130	6	14	4
3 80	190	18	16	16	3	128	90.7	34	42	10	102	110	88.9	150	6	18	4
4 100	210	18	16	16	3	148	116.1	40	45	10	130	130	114.3	170	6	18	4
5 125	240	20	18	18	3	178	143.8	44	48	10	155	160	139.7	200	6	18	8
6 150	265	20	18	18	3	202	170.7	44	48	12	184	185	168.3	225	8	18	8
8 200	320	22	20	20	3	258	221.5	44	55	15	236	240	219.1	280	8	18	8
10 250	375	24	22	22	3	312	276.4	44	60	15	290	295	273	335	10	18	12
12 300	440	24	22	22	4	365	327.2	44	62	15	342	355	323.9	395	10	22	12
14 350	490	26	22	22	4	415	359.2	-	62	15	385	-	355.6	445	10	22	12
16 400	540	28	22	22	4	465	410.5	-	65	15	438	-	406.4	495	10	22	16
18 450	595	30	24	24	4	520	461.8	-	65	15	492	-	457	550	12	22	16
20 500	645	30	24	24	4	570	513.1	-	68	15	538	-	508	600	12	22	20
24 600	755	32	24	34	5	670	616	-	70	16	640	-	610	705	12	26	20

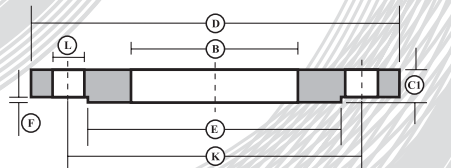


Code 111



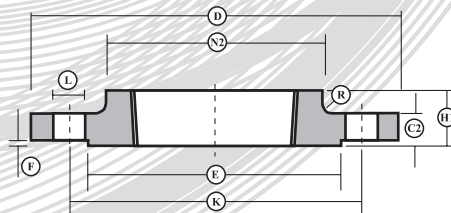
Steel Welding Neck Flange

Code 101



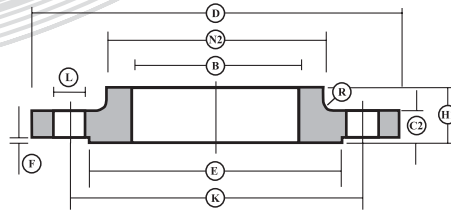
Steel Plate Slip-on Flange

Code 113



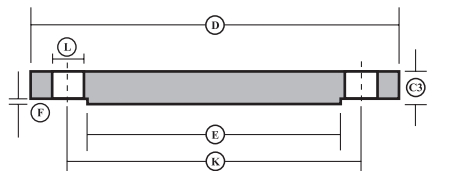
Screwed Boss Flange

Code 112



Slip-on Boss Flange

Code 105



Steel Plate Blind Flange

BS4504: Section: 3.1: 1989

Dimensions of PN10 Flanges

N B Size INS MM	D	C1	C2	C3	F	E	B	H1	H2	H3	N1	N2	A	K	R	L	No. Holes
8 200	340	24	24	24	3	268	221.5	44	62	16	234	246	219.1	295	8	22	8
10 250	395	26	26	26	3	320	276.4	46	68	16	288	298	273	350	10	22	12
12 300	445	26	26	26	4	370	327.2	46	68	16	342	350	323.9	400	10	22	12
14 350	505	28	26	26	4	430	359.2	53	68	16	390	400	355.6	460	10	22	16
16 400	565	32	26	26	4	482	410.5	57	72	16	440	456	406.4	515	10	26	16
18 450	615	36	28	28	4	532	461.8	63	72	16	488	502	457	565	12	26	20
20 500	670	38	28	28	4	585	513.1	67	75	16	540	559	508	620	12	26	20
24 600	780	42	28	34	5	685	616	75	80	18	640	658	610	725	12	30	20

Note: For sizes 10mm - 150mm nominal bore use PN16 dimensions

BS4504: Section: 3.1: 1989

Dimensions of PN16 Flanges

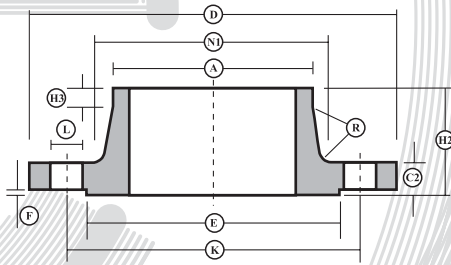
N B Size INS MM	D	C1	C2	C3	F	E	B	H1	H2	H3	N1	N2	A	K	R	L	No. Holes
3/8 10	90	14	14	14	2	40	18.2	20	35	6	28	30	17.2	60	3	14	4
1/2 15	95	14	14	14	2	45	22.4	20	35	6	32	35	21.3	65	3	14	4
3/4 20	105	16	16	16	2	58	27.7	24	38	6	39	45	26.9	75	4	14	4
1 25	115	16	16	16	2	68	34.5	24	38	6	46	52	33.7	85	4	14	4
1 1/4 32	140	18	16	16	2	78	43.2	26	40	6	56	60	42.4	100	5	18	4
1 1/2 40	150	18	16	16	3	88	49.5	26	42	7	64	70	48.3	110	5	18	4
2 50	165	20	18	18	3	102	62	28	45	8	74	84	60.3	125	5	18	4
2 1/2 65	185	20	18	18	3	122	74.7	32	45	10	92	104	76.1	145	6	18	4
3 80	200	20	20	20	3	138	90.7	34	50	10	110	118	88.9	160	6	18	8
4 100	220	22	20	20	3	158	116.1	40	52	12	130	140	114.3	180	6	18	8
5 125	250	22	22	22	3	188	143.8	44	55	12	158	168	139.7	210	6	18	8
6 150	285	24	22	22	3	212	170.7	44	55	12	184	195	168.3	240	8	22	8
8 200	340	26	24	24	3	268	221.5	44	62	16	234	246	219.1	295	8	22	12
10 250	405	29	26	26	3	320	276.4	46	70	16	288	298	273	355	10	26	12
12 300	460	32	28	28	4	378	327.2	46	78	16	342	350	323.9	410	10	26	12
14 350	520	35	30	30	4	438	359.2	57	82	16	390	400	355.6	470	10	26	16
16 400	580	38	32	32	4	490	410.5	63	85	16	444	456	406.4	525	10	30	16
18 450	640	42	34	34	4	550	461.8	68	87	16	490	502	457	585	12	30	20
20 500	715	46	34	36	4	610	513.1	73	90	16	546	559	508	650	12	33	20
24 600	840	52	36	44	5	725	616	83	95	18	650	658	610	770	12	36	20

BS4504: Section: 3.1: 1989

Dimensions of PN25 & PN40 Flanges

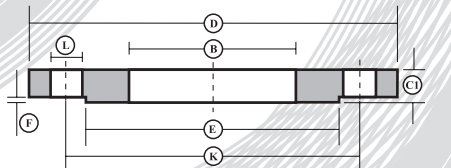


Code 111



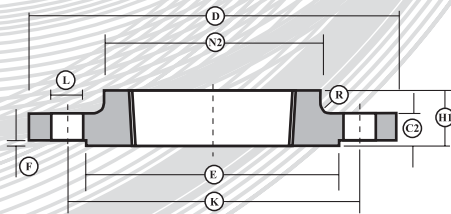
Steel Welding Neck Flange

Code 101



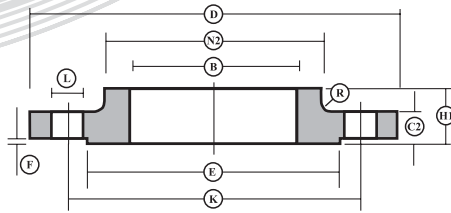
Steel Plate Slip-on Flange

Code 113



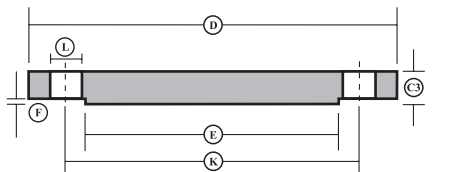
Screwed Boss Flange

Code 112



Slip-on Boss Flange

Code 105



Steel Plate Blind Flange

BS4504: Section: 3.1: 1989

Dimensions of PN25 Flanges

N B Size INS MM	D	C1	C2	C3	F	E	B	H1	H2	H3	N1	N2	A	K	R	L	No. Holes
8 200	360	32	30	30	3	278	221.5	52	80	16	244	256	219.1	310	8	26	12
10 250	425	35	32	32	3	335	276.4	60	88	18	296	310	273	370	10	30	12
12 300	485	38	34	34	4	395	327.2	67	92	18	350	364	323.9	430	10	30	16
14 350	555	42	38	38	4	450	359.2	72	100	20	398	418	355.6	490	10	33	16
16 400	620	46	40	40	4	505	410.5	78	110	20	452	472	406.4	550	10	36	16
18 450	670	50	42	42	4	555	461.8	84	110	20	500	520	457	600	12	36	20
20 500	730	56	44	45	4	615	513.1	90	125	20	558	580	508	660	12	36	20
24 600	845	68	46	54	5	720	616	100	125	20	660	684	610	770	12	39	20

Note: For sizes 10mm - 150mm nominal bore use PN40 dimensions

BS4504: Section: 3.1: 1989

Dimensions of PN40 Flanges

N B Size INS MM	D	C1	C2	C3	F	E	B	H1	H2	H3	N1	N2	A	K	R	L	No. Holes
3/8 10	90	14	16	16	2	40	18.2	22	35	6	28	30	17.2	60	3	14	4
1/2 15	95	14	16	16	2	45	22.4	22	38	6	32	35	21.3	65	3	14	4
3/4 20	105	16	18	18	2	58	27.7	26	40	6	40	45	26.9	75	4	14	4
1 25	115	16	18	18	2	68	34.5	28	40	6	46	52	33.7	85	4	14	4
1 1/4 32	140	18	18	18	2	78	43.2	30	42	6	56	60	42.4	100	5	18	4
1 1/2 40	150	18	18	18	3	88	49.5	32	45	7	64	70	48.3	110	5	18	4
2 50	165	20	20	20	3	102	62	34	48	8	74	84	60.3	125	5	18	4
2 1/2 65	185	22	22	22	3	122	74.7	38	52	10	92	104	76.1	145	6	18	8
3 80	200	24	24	24	3	138	90.7	40	58	12	110	118	88.9	160	6	18	8
4 100	235	26	24	24	3	162	116.1	44	65	12	134	145	114.3	190	6	22	8
5 125	270	28	26	26	3	188	143.8	48	68	12	162	170	139.7	220	6	26	8
6 150	300	30	28	28	3	218	170.7	52	75	12	190	200	168.3	250	8	26	8
8 200	375	36	34	34	3	285	221.5	52	88	16	244	260	219.1	320	8	30	12
10 250	450	42	38	38	3	345	276.4	60	105	18	306	312	273	385	10	33	12
12 300	515	48	42	42	4	410	327.2	67	115	18	362	380	323.9	450	10	33	16
14 350	580	54	46	46	4	465	359.2	72	125	20	408	424	355.6	510	10	36	16
16 400	660	60	50	50	4	535	410.5	78	135	20	462	478	406.4	585	10	39	16
18 450	685	66	50	54	4	560	461.8	84	135	20	500	522	457	610	12	39	20
20 500	755	72	52	56	4	615	513.1	90	140	20	562	576	508	670	12	42	20
24 600	890	84	60	70	5	735	616	100	150	20	666	686	610	795	12	48	20

Address: Evenort Ltd
Houghton Road
North Anston Trading Estate
Sheffield
S25 4JJ

Tel: 01909 569361
Fax: 01909 550631

E-mail: sales@evenort.co.uk
Web: www.evenort.co.uk

Evenort Ltd are
official agents for:
Hilton Metal Forgings Ltd
701 Palm Spring
Link Road
Malad (West)
Mumbai 400 064
India

