

STAINLESS STEEL AND NICKEL ALLOY FLANGES

EN1092-1: 2001 (E)



EN1092-1 : 2001 (E)

Dimensions of PN2.5 & PN6 & PN10 Flanges

EN1092-1 : 2001 (E)

Dimensions of PN2.5 & PN6 Flanges

N B Size INS MM	D	C1	C2	C3	F	E	B1	B2	H1	H2	N1	N2	A	K	R1	L	No. Holes
3/8 10	75	12	12	12	10	3	18.2	21	20	28	26	25	17.2	50	4	11	4
1/2 15	80	12	12	12	10	3	22.4	25	20	30	30	30	21.3	55	4	11	4
3/4 20	90	14	14	14	10	4	27.7	31	24	32	38	40	26.9	65	4	11	4
1 25	100	14	14	14	10	4	34.5	38	24	35	42	50	33.7	75	4	11	4
1 1/4 32	120	16	14	14	10	5	43.2	46	26	35	55	60	42.4	90	6	14	4
1 1/2 40	130	16	14	14	10	5	49.5	53	26	38	62	70	48.3	100	6	14	4
2 50	140	16	14	14	12	5	62	65	28	38	74	80	60.3	110	6	14	4
2 1/2 65	160	16	14	14	12	6	74.7	81	32	38	88	100	76.1	130	6	14	4
3 80	190	18	16	16	12	6	90.7	94	34	42	102	110	88.9	150	8	18	4
4 100	210	18	16	16	14	6	116.1	120	40	45	130	130	114.3	170	8	18	4
5 125	240	20	18	18	14	6	143.8	145	44	48	155	160	139.7	200	8	18	8
6 150	265	20	18	18	14	6	170.7	174	44	48	184	185	168.3	225	10	18	8
8 200	320	22	20	20	16	6	221.5	226	44	55	236	240	219.1	280	10	18	8
10 250	375	24	22	22	18	8	276.4	281	44	60	290	295	273	335	12	18	12
12 300	440	24	22	22	18	8	327.2	333	44	62	342	355	323.9	395	12	22	12
14 350	490	26	22	22	18	8	359.2	365	-	62	385	-	335.6	445	12	22	12
16 400	540	28	22	22	20	8	410.5	416	-	65	438	-	406.4	495	12	22	16
18 450	595	30	22	24	20	8	461.8	467	-	65	492	-	457	550	12	22	16
20 500	645	30	24	24	22	8	513.1	519	-	68	538	-	508	600	12	22	20
24 600	755	32	30	30	22	8	616	622	-	70	640	-	610	705	12	26	20

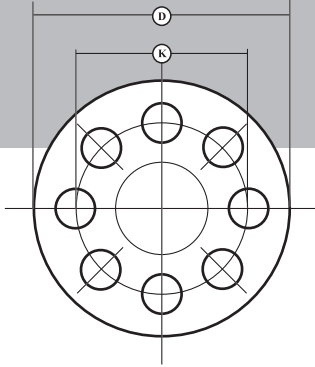
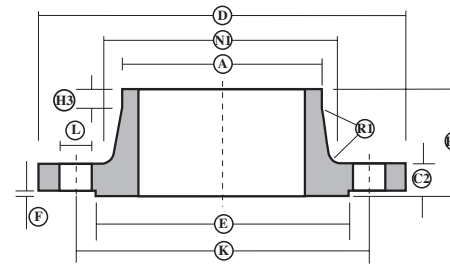
EN1092-1 : 2001 (E)

Dimensions of PN10 Flanges

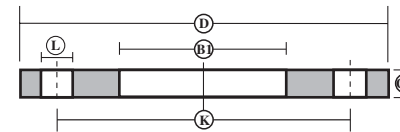
N B Size INS MM	D	C1	C2	C3	F	E	B1	B2	H1	H2	N1	N2	A	K	R1	L	No. Holes
8 200	340	24	24	24	20	6	221.5	240	44	62	234	246	219.1	295	10	22	8
10 250	395	26	26	26	22	8	276.4	294	46	68	292	298	273.0	350	12	22	12
12 300	445	26	26	26	22	8	327.2	348	46	68	342	350	323.9	400	12	22	12
14 350	505	28	26	26	22	8	359.2	400	53	68	385	400	355.6	460	12	22	16
16 400	565	32	26	26	24	8	410.5	450	57	72	440	456	406.4	515	12	26	16
18 450	615	36	28	28	24	8	461.8	498	63	72	488	502	457.0	565	12	26	20
20 500	670	38	28	28	26	8	513.5	550	67	75	542	559	508.0	620	12	26	20
24 600	780	42	28	34	26	8	616	650	75	80	642	658	610.0	725	12	30	20

Note: For sizes 10mm - 40mm nominal bore use PN40 dimensions
For sizes 50mm - 150mm nominal bore use PN40 dimensions

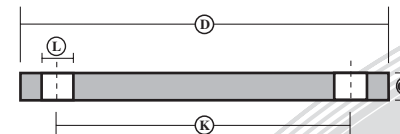
Note: This diagram illustrates the correct position but not necessarily the correct number of bolt holes



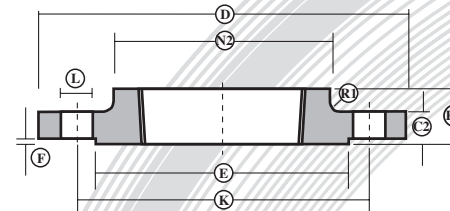
Steel Welding Neck Flange 11



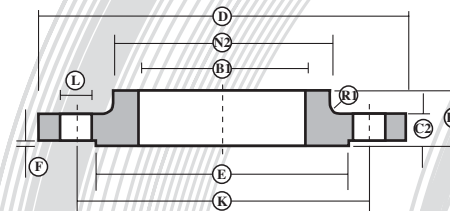
Steel Plate Slip-on Flange Ø1



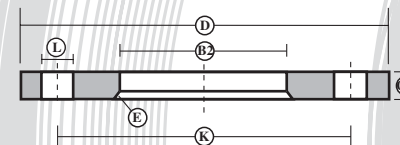
Steel Plate Blind Flange Ø5



Screwed Boss Flange 13



Slip-on Boss Flange 12



Backing Flange Ø2



EN1092-1 : 2001 (E)

Dimensions of PN16 Flanges

N B Size INS	MM	D	C1	C2	C3	F	E	B1	B2	H1	H2	N1	N2	A	K	R1	L	No. Holes
2	50	165	19	18	18	16	5	61.5	65	28	45	74	84	60.3	125	5	18	4
2 1/2	65	185	20	18	18	16	6	77.5	81	32	45	92	104	76.1	145	6	18	8 b
3	80	200	20	20	20	16	6	90.7	94	34	50	105	118	88.9	160	6	18	8
4	100	220	22	20	20	18	6	116.1	120	40	52	131	140	114.3	180	8	18	8
5	125	250	22	22	22	18	6	143.8	145	44	55	156	168	139.7	210	8	18	8
6	150	285	24	22	22	20	6	170.7	174	44	55	184	195	168.3	240	10	22	8
8	200	340	26	24	24	20	6	221.5	226	44	62	235	246	219.1	295	10	22	12
10	250	405	29	26	26	22	8	276.4	281	46	70	292	298	273.0	355	12	26	12
12	300	460	32	28	28	24	8	327.2	333	46	78	344	350	323.9	410	12	26	12
14	350	520	35	30	30	26	8	359.2	365	57	82	390	400	355.6	470	12	26	16
16	400	580	38	32	32	28	8	410.5	416	63	85	445	456	406.4	525	12	30	16
18	450	640	42	40	40	30	8	461.8	467	68	87	490	502	457.0	585	12	30	20
20	500	715	46	44	44	32	8	513.1	510	73	90	548	559	508.0	650	12	33	20
24	600	840	52	52	54	32	8	616	622	83	95	652	658	610.0	770	12	36	20

Note: For sizes 10mm - 40mm nominal bore use PN40 dimensions

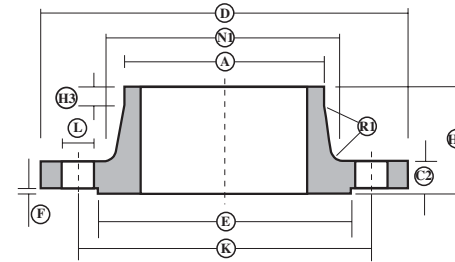
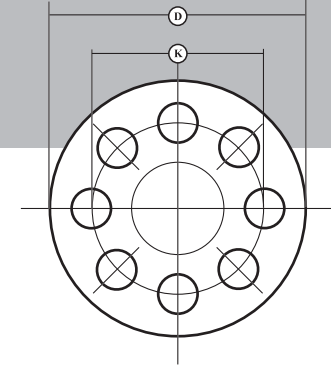
EN1092-1 : 2001 (E)

Dimensions of PN25 Flanges

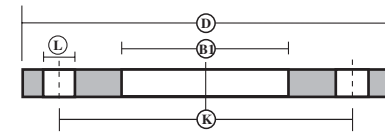
N B Size INS	MM	D	C1	C2	C3	F	E	B1	B2	H1	H2	N1	N2	A	K	R1	L	No. Holes
8	200	360	32	30	30	26	6	221.5	226	52	80	244	256	219.1	310	10	26	12
10	250	425	35	32	32	26	8	276.4	281	60	88	298	310	273.0	370	12	30	12
12	300	485	38	34	34	28	8	327.2	333	67	92	352	364	323.9	430	12	30	16
14	350	555	42	38	38	32	8	359.2	365	72	100	398	418	355.6	490	12	33	16
16	400	620	46	40	40	34	8	410.5	416	78	110	452	472	406.4	550	12	36	16
18	450	670	50	46	46	36	8	461.8	467	84	110	500	520	457.0	600	12	36	20
20	500	730	56	48	48	38	8	513.1	519	90	125	558	580	508.0	660	12	36	20
24	600	845	68	58	58	40	8	616	622	100	125	660	684	610.0	770	12	39	20

Note: For sizes 10mm - 150mm nominal bore use PN40 dimensions

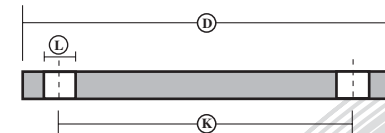
Note: This diagram illustrates the correct position but not necessarily the correct number of bolt holes



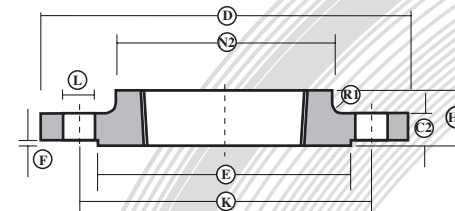
Steel Welding Neck Flange 11



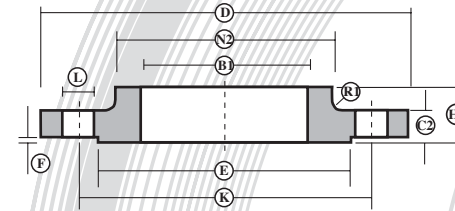
Steel Plate Slip-on Flange 01



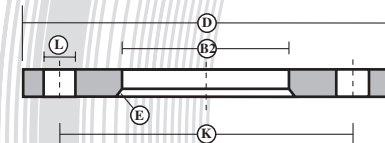
Steel Plate Blind Flange 05



Screwed Boss Flange 13



Slip-on Boss Flange 12



Backing Flange 02

EN1092-1 : 2001 (E)

Dimensions of PN40 and PN63 Flanges

EN1092-1 : 2001 (E)

Dimensions of PN40 Flanges

N B Size INS MM	D	C1	C2	C3	F	E	B1	B2	H1	H2	N1	N2	A	K	R1	L	No. Holes
3/8 10	90	14	16	16	12	3	18.2	21	22	35	28	30	17.2	60	4	14	4
1/2 15	95	14	16	16	12	3	22.4	25	22	38	32	35	21.3	65	4	14	4
3/4 20	105	16	18	18	14	4	27.7	31	26	40	40	45	26.9	75	4	14	4
1 25	115	16	18	18	14	4	34.5	38	28	40	46	52	33.7	85	4	14	4
1 1/4 32	140	18	18	18	14	5	43.2	47	30	42	56	60	42.4	100	6	18	4
1 1/2 40	150	18	18	18	14	5	49.5	53	32	45	64	70	48.3	110	6	18	4
2 50	165	20	20	20	16	5	62	65	34	48	75	84	60.3	125	6	18	4
2 1/2 65	185	22	22	22	16	6	74.7	81	38	52	90	104	76.1	145	6	18	8
3 80	200	24	24	24	18	6	90.7	94	40	58	105	118	88.9	160	8	18	8
4 100	235	26	24	24	20	6	116.1	120	44	65	134	145	114.3	190	8	22	8
5 125	270	28	26	26	22	6	143.8	145	48	68	162	170	139.7	220	8	26	8
6 150	300	30	28	28	24	6	170.7	174	52	75	192	200	168.3	250	10	26	8
8 200	375	36	34	36	28	6	221.5	226	52	88	244	260	219.1	320	10	30	12
10 250	450	42	38	38	30	8	276.4	281	60	105	306	312	273.0	385	12	33	12
12 300	515	48	42	42	34	8	327.2	333	67	115	362	380	323.9	450	12	33	16
14 350	580	54	46	46	36	8	359.2	365	72	125	408	424	355.6	510	12	36	16
16 400	660	60	50	50	42	8	410.5	416	78	135	462	478	406.4	585	12	39	16
18 450	685	66	57	57	46	8	461.8	467	84	135	500	522	457.0	610	12	39	20
20 500	755	72	57	57	50	8	513.1	519	90	140	562	576	508.0	670	12	42	20
24 600	890	84	72	72	54	8	616	622	100	150	666	686	610.0	795	12	48	20

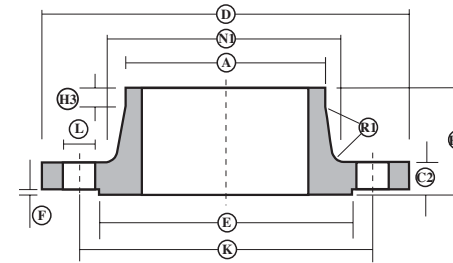
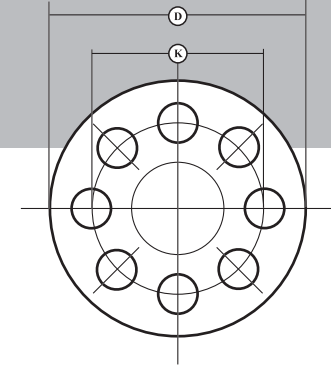
EN1092-1 : 2001 (E)

Dimensions of PN63 Flanges

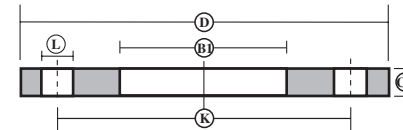
N B Size INS MM	D	C1	C2	C3	F	E	B1	B2	H1	H2	N1	N2	A	K	R1	L	No. Holes
2 50	180	26	26	26			62		36	62	82	90	60.3	135	6	22	4
2 1/2 65	205	26	26	26			74.7		40	68	98	112	76.1	160	6	22	8
3 80	215	30	28	28			90.7		44	72	112	125	88.9	170	8	22	8
4 100	250	32	30	30			116.1		52	78	138	152	114.3	200	8	26	8
5 125	295	34	34	34			143.8		56	88	168	185	139.7	240	8	30	8
6 150	345	36	36	36			170.7		60	95	202	215	168.3	280	10	33	8
8 200	415	46	42	42			221.5		-	110	256	-	219.1	345	10	36	12
10 250	470	54	46	46			276.4		-	125	316	-	273.0	400	12	36	12
12 300	530	62	52	52			327.2		-	140	372	-	323.9	460	12	36	16
14 350	600	72	56	56			359.2		-	150	420	-	355.6	525	12	39	16
16 400	670	78	60	60			410.5		-	160	475	-	406.4	585	12	42	16
20 500	800	-	-	-			513.1		-	-	-	-	-	705	12	48	20
24 600	930	-	-	-			616		-	-	-	-	-	820	15	56	20

Note: For sizes 10mm - 40mm nominal bore use PN100 dimensions

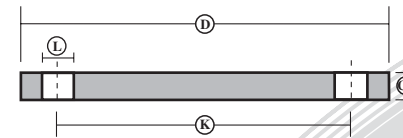
Note: This diagram illustrates the correct position but not necessarily the correct number of bolt holes



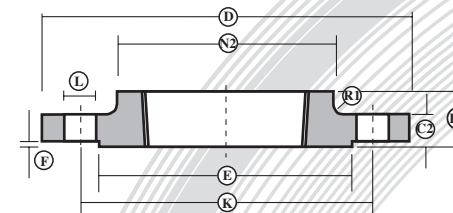
Steel Welding Neck Flange
11



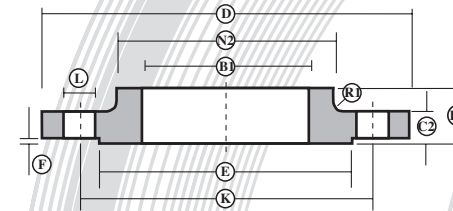
Steel Plate Slip-on Flange
01



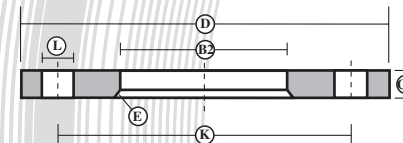
Steel Plate Blind Flange
05



Screwed Boss Flange
18



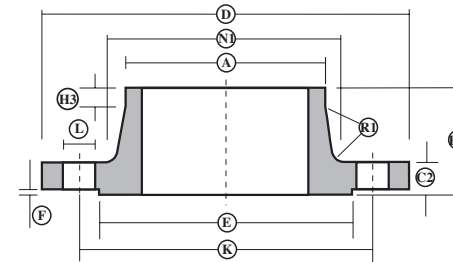
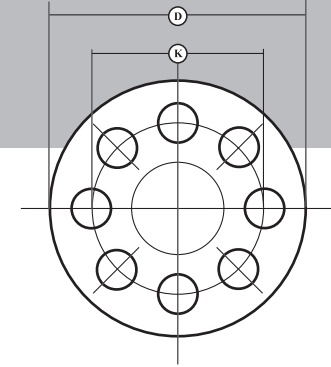
Slip-on Boss Flange
12



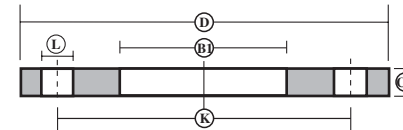
Backing Flange
02

N B Size INS MM	D	C1	C2	C3	F	E	B1	B2	H1	H2	N1	N2	A	K	R1	L	No. Holes
3/8 10	100	20	20	20			18.2		28	45	32	40	17.2	70	4	14	4
1/2 15	105	20	20	20			22.4		28	45	34	43	21.3	75	4	14	4
3/4 20	130	22	22	22			27.7		30	48	42	52	26.9	90	4	18	4
1 25	140	24	24	24			34.5		32	58	52	60	33.7	100	4	18	4
1 1/4 32	155	24	24	26			43.2		32	60	62	68	42.4	110	6	22	4
1 1/2 40	170	26	26	28			49.5		34	62	70	80	48.3	125	6	22	4
2 50	195	28	28	30			62		36	68	90	95	60.3	145	6	26	4
2 1/2 65	220	30	30	34			74.7		40	76	108	118	76.1	170	6	26	8
3 80	230	34	32	36			90.7		44	78	120	130	88.9	180	8	26	8
4 100	265	36	36	40			116.1		52	90	150	158	114.3	210	8	30	8
5 125	315	42	40	40			143.8		56	105	180	188	139.7	250	8	33	8
6 150	355	48	44	44			170.7		60	115	210	225	168.3	290	10	33	12
8 200	430	60	52	52			221.5	-	130	278	-	219.1	360	10	36	12	
10 250	505	72	60	60			276.4	-	157	340	-	273.0	430	12	39	12	
12 300	585	84	68	68			327.2	-	170	400	-	323.9	500	12	42	16	
14 350	655	95	74	74			359.2	-	189	460	-	355.6	560	12	48	16	
16 400	715	106	-	78			410.5	-	-	-	-	406.4	620	-	48	16	
20 500	870	128	-	94			513.1	-	-	-	-	508.0	760	-	56	20	

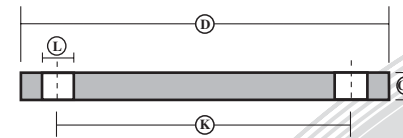
Note: This diagram illustrates the correct position but not necessarily the correct number of bolt holes



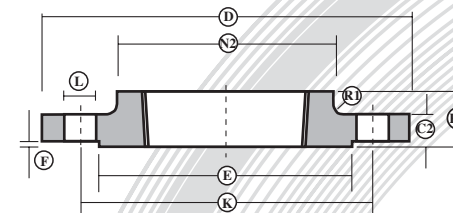
Steel Welding Neck Flange 11



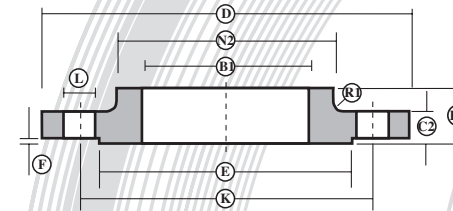
Steel Plate Slip-on Flange Ø1



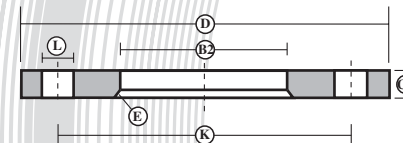
Steel Plate Blind Flange Ø5



Screwed Boss Flange 13



Slip-on Boss Flange 12



Backing Flange Ø2

Address: Evenort Ltd
Houghton Road
North Anston Trading Estate
Sheffield
S25 4JJ

Tel: 01909 569361
Fax: 01909 550631

E-mail: sales@evenort.co.uk
Web: www.evenort.co.uk

Evenort Ltd are
official agents for:
Hilton Metal Forgings Ltd
701 Palm Spring
Link Road
Malad (West)
Mumbai 400 064
India

www.hmfl.co.in

