

# STAINLESS STEEL AND NICKEL ALLOY FLANGES

JIS B 2220: 2004





Dimensions of Flanges for Nominal Pressure 5K

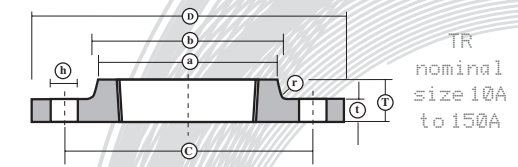
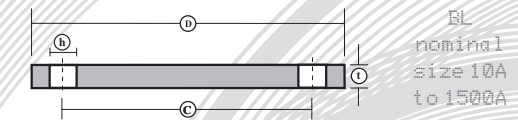
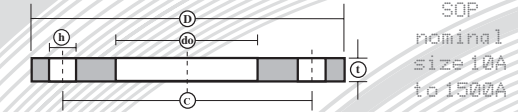
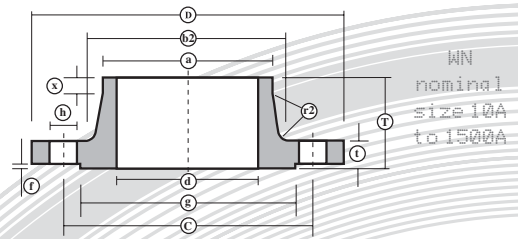
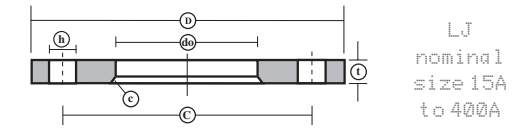
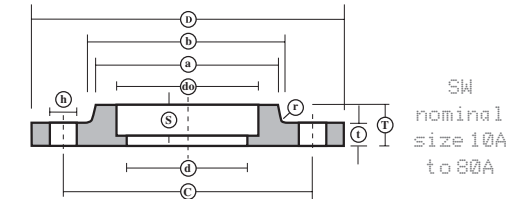
N B Size INS MM	D	C	h	do SOP SOH SW	do LJ	d SW WN	S SW	g WN TT	f WN TT	t EXCEPT FOR BL	t BL	a SOH SW LJ TR	a WN	b SOH SW LJ TR	b2 WN	x WN
3/8 10	75	55	12	17.8	-	12.7	10	39	1	9	9	23	17.3	26	26	1.25
1/2 15	80	60	12	22.2	23.4	16.1	10	44	1	9	9	27	21.7	30	31	1.25
3/4 20	85	65	12	27.7	28.9	21.6	13	49	1	10	10	33	27.2	36	38	1.25
1 25	95	75	12	34.5	35.6	27.6	13	59	1	10	10	41	34.0	44	46	1.25
1 1/4 32	115	90	15	43.2	44.3	35.7	13	70	2	12	12	50	42.7	53	55	1.25
1 1/2 40	120	95	15	49.1	50.4	41.6	13	75	2	12	12	56	48.6	60	62	1.25
2 50	130	105	15	61.1	62.7	52.9	16	85	2	14	14	69	60.5	73	73	1.25
2 1/2 65	155	130	15	77.1	78.7	67.9	16	110	2	14	14	86	76.3	91	91	1.25
3 80	180	145	19	90	91.6	80.7	16	121	2	14	14	99	89.1	105	105	1.25
3 1/2 90	190	155	19	102.6	104.1	93.2	-	131	2	14	14	-	101.6	-	117	1.25
4 100	200	165	19	115.4	116.9	105.3	-	141	2	16	16	127	114.3	130	128	1.25
5 125	235	200	19	141.2	143.0	130.8	-	176	2	16	16	154	139.8	161	156	1.25
6 150	265	230	19	166.6	168.4	155.2	-	206	2	18	18	182	165.2	189	184	1.25
7 175	300	260	23	192.1	-	180.1	-	232	2	18	18	-	190.7	-	209	1.25
8 200	320	280	23	218	219.5	204.7	-	252	2	20	20	-	216.3	-	235	1.25
9 225	345	305	23	243.7	-	229.4	-	277	2	20	20	-	241.8	-	261	1.25
10 250	385	345	23	269.5	271.7	254.2	-	317	2	22	22	-	267.4	-	290	1.25
12 300	430	390	23	321	322.8	304.7	-	360	3	22	22	-	318.5	-	342	1.25
14 350	480	435	25	358.1	360.2	339.8	-	406	3	24	24	-	355.6	-	385	1.25
16 400	540	495	25	409	411.2	390.6	-	463	3	24	24	-	406.4	-	438	1.25
18 450	605	555	25	460	462.3	441.4	-	523	3	24	24	495	457.2	500	491	1.25
20 500	655	605	25	511	514.4	492.2	-	573	3	24	24	546	508.0	552	541	1.25

Dimensions of Flanges for Nominal Pressure 10K

N B Size INS MM	D	C	h	do SOP SOH SW	do LJ	d14 SW WN	S SW	g WN TT	f WN TT	t EXCEPT FOR BL	t BL	a SOH SW LJ TR	a WN	b SOH SW LJ TR	b2 WN	x WN
3/8 10	90	65	15	17.8	-	12.7	10	46	1	12	12	23	17.3	26	28	1.25
1/2 15	95	70	15	22.2	23.4	16.1	10	51	1	12	12	27	21.7	30	33	1.25
3/4 20	100	75	15	27.7	28.9	21.6	13	56	1	14	14	33	27.2	36	38	1.25
1 25	125	90	19	34.5	35.6	27.6	13	67	1	14	14	41	34.0	44	47	1.25
1 1/4 32	135	100	19	43.2	44.3	35.7	13	76	2	16	16	50	42.7	53	56	1.25
1 1/2 40	140	105	19	49.1	50.4	41.6	13	81	2	16	16	56	48.6	60	62	1.25
2 50	155	120	19	61.1	62.7	52.9	16	96	2	16	16	69	60.5	73	75	1.25
2 1/2 65	175	140	19	77.1	78.7	67.9	16	116	2	18	18	86	76.3	91	92	1.25
3 80	185	150	19	90	91.6	80.7	16	126	2	18	18	99	89.1	105	105	1.25
3 1/2 90	195	160	19	102.6	104.1	93.2	-	136	2	18	18	-	101.6	-	117	1.25
4 100	210	175	19	115.4	116.9	105.3	-	151	2	18	18	127	114.3	130	130	1.25
5 125	250	210	23	141.2	143.0	130.8	-	182	2	20	20	154	139.8	161	156	1.25
6 150	280	240	23	166.6	168.4	155.2	-	212	2	22	22	182	165.2	189	184	1.25
7 175	305	265	23	192.1	-	180.1	-	237	2	22	22	-	190.7	-	210	1.25
8 200	330	290	23	218	219.5	204.7	-	262	2	22	22	-	216.3	-	238	1.25
9 225	350	310	23	243.7	-	229.4	-	282	2	22	22	-	241.8	-	261	1.25
10 250	400	355	25	269.5	271.7	254.2	-	324	2	24	24	288	267.4	292	292	1.25
12 300	445	400	25	321	322.8	304.7	-	368	3	24	24	340	318.5	346	345	1.25
14 350	490	445	25	358.1	360.2	339.8	-	413	3	26	26	380	355.6	386	388	1.25
16 400	560	510	27	409	411.2	390.6	-	475	3	28	28	436	406.4	442	442	1.25
18 450	620	565	27	460	462.3	441.4	-	530	3	30	30	496	457.2	502	495	1.25
20 500	675	620	27	511	514.4	492.2	-	585	3	30	30	548	508.0	554	546	1.5

Bossed type Slip On Flanges are specified in  
JIS from size 450A to 1500A only

N B Size INS MM	x TT	T SOH SW LJ TR	T WN	c LJ	f SOH SW LJ TR	r2 WN	NO. HOLES
3/8 10	1.25	13	24	-	4	4	4
1/2 15	1.25	13	25	3	4	4	4
3/4 20	1.25	15	28	3	4	4	4
1 25	1.25	17	30	3	4	4	4
1 1/4 32	1.25	19	33	4	4	4	4
1 1/2 40	1.25	20	34	4	4	4	4
2 50	1.25	24	36	4	4	4	4
2 1/2 65	1.25	27	39	5	4	4	4
3 80	1.25	30	41	5	4	4	4
3 1/2 90	1.25	-	41	5	-	4	4
4 100	1.25	36	41	5	4	4	8
5 125	1.25	40	43	6	4	4	8
6 150	1.25	40	49	6	4	4	8
7 175	1.25	-	49	-	-	4	8
8 200	1.25	-	53	6	-	4	8
225	1.25	-	54	-	-	4	12
10 250	1.25	-	61	6	-	4	12
12 300	1.25	-	62	9	-	4	12
14 350	1.25	-	73	9	-	4	12
16 400	1.25	-	76	9	-	4	16
18 450	1.25	40	79	9	5	5	16
20 500	1.25	40	79	9	5	5	20



N B Size INS MM	x TT	T SOH SW LJ TR	T WN	c LJ	f SOH SW LJ TR	r2 WN	NO. HOLES
3/8 10	1.25	16	29	-	4	4	4
1/2 15	1.25	16	31	3	4	4	4
3/4 20	1.25	20	32	3	4	4	4
1 25	1.25	20	36	3	4	4	4
1 1/4 32	1.25	22	38	4	4	4	4
1 1/2 40	1.25	24	38	4	4	4	4
2 50	1.25	24	40	4	4	4	4
2 1/2 65	1.25	27	44	5	4	4	4
3 80	1.25	30	45	5	4	5	8
3 1/2 90	1.25	-	45	5	-	5	8
4 100	1.25	36	45	5	4	5	8
5 125	1.25	40	47	6	4	5	8
6 150	1.25	40	53	6	4	5	8
7 175	1.25	-	55	-	-	5	12
8 200	1.25	-	58	6	-	5	12
9 225	1.25	-	58	-	-	5	12
10 250	1.25	36	65	6	6	6	12
12 300	1.25	38	68	9	6	6	16
14 350	1.25	42	79	9	6	6	16
16 400	1.25	44	85	9	6	6	16
18 450	1.25	48	90	9	6	6	20
20 500	1.50	48	99	9	6	6	20

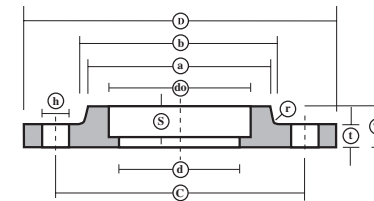


Dimensions of Light Flanges for Nominal Pressure 10K

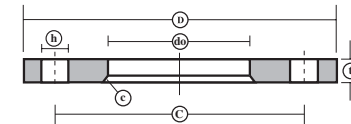
N B Size INS MM	D SOP SOH	C SOP SOH	h SOP SOH	do SOP SOH	t SOP SOH	a SOH	b SOH	T SOH	R SOH	NO. HOLES
3/8 10	90	65	12	17.8	9	-	-	-	-	4
1/2 15	95	70	12	22.2	9	-	-	-	-	4
3/4 20	100	75	12	27.7	10	-	-	-	-	4
1 25	125	90	15	34.5	12	-	-	-	-	4
1 1/4 32	135	100	15	43.2	12	-	-	-	-	4
1 1/2 40	140	105	15	49.1	12	-	-	-	-	4
2 50	155	120	15	61.1	14	-	-	-	-	4
2 1/2 65	175	140	15	77.1	14	-	-	-	-	4
3 80	185	150	15	90.0	14	-	-	-	-	8
3 1/2 90	195	160	15	102.6	14	-	-	-	-	8
4 100	210	175	15	115.4	16	-	-	-	-	8
5 125	250	210	19	141.2	18	-	-	-	-	8
6 150	280	240	19	166.6	18	-	-	-	-	8
7 175	305	265	19	192.1	20	-	-	-	-	12
8 200	330	290	19	218.0	20	-	-	-	-	12
9 225	350	310	19	243.7	20	-	-	-	-	12
10 250	400	355	23	269.5	22	-	-	-	-	12
12 300	445	400	23	321.0	22	-	-	-	-	16
14 350	490	445	23	358.1	24	-	-	-	-	16
16 400	560	510	25	409.0	24	436	442	36	5	16

Light flanges are available in slip-on plate and slip-on hubbed.

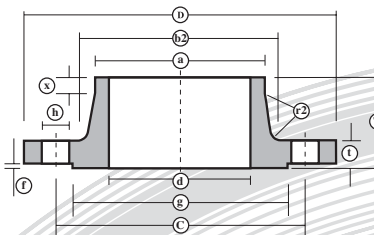
Bossed type Slip On Flanges are specified in JIS from size 450A to 1500A



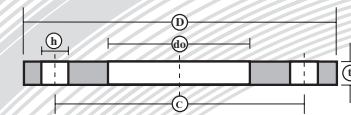
SW nominal size 10A to 80A



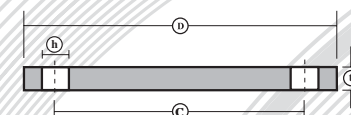
LJ nominal size 15A to 400A



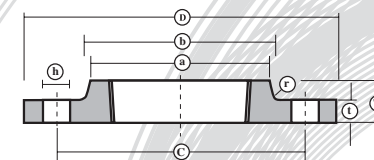
WN nominal size 10A to 1500A



SOP nominal size 10A to 1500A



BL nominal size 10A to 1500A



TR nominal size 10A to 1500A

Dimensions of Flanges for Nominal Pressure 16K

N B Size INS MM	D	C	h	do SOH SW	do LJ	d22 SW WN	d IT	S SW	g WN IT	f WN IT	t SOH, SW,LJ,TR WN,IT,BL	a SOH SW,LJ,TR	a WN	b SOH SW,LJ,TR	b2 WN	x WN	x IT
3/8 10	90	65	15	17.8	-	12.7	10	10	46	1	12	26	17.3	28	29	1.25	1.25
1/2 15	95	70	15	22.2	23.4	16.1	15	10	51	1	12	30	21.7	32	34	1.25	1.25
3/4 20	100	75	15	27.7	28.9	21.4	20	13	56	1	14	38	27.2	42	39	1.25	1.25
1 25	125	90	19	34.5	35.6	27.2	25	13	67	1	14	46	34.0	50	47	1.25	1.25
1 1/4 32	135	100	19	43.2	44.3	35.5	32	13	76	2	16	56	42.7	60	56	1.25	1.25
1 1/2 40	140	105	19	49.1	50.4	41.2	40	13	81	2	16	62	48.6	66	62	1.25	1.25
2 50	155	120	19	61.1	62.7	52.7	50	16	96	2	16	76	60.5	80	75	1.25	1.25
2 1/2 65	175	140	19	77.1	78.7	65.9	65	16	116	2	18	94	76.3	98	92	1.25	1.25
3 80	200	160	23	90.0	91.6	78.1	80	16	132	2	20	108	89.1	112	105	1.25	1.25
3 1/2 90	210	170	23	102.6	104.1	90.2	90	-	145	2	20	120	101.6	124	118	1.25	1.25
4 100	225	185	23	115.4	116.9	102.3	100	-	160	2	22	134	114.3	138	134	1.25	1.25
5 125	270	225	25	141.2	143.0	126.6	125	-	195	2	22	164	139.8	170	162	1.25	1.25
6 150	305	260	25	166.6	168.4	151.0	150	-	230	2	24	196	165.2	202	192	1.25	1.25
8 200	350	305	25	218	219.5	199.9	200	-	275	2	26	244	216.3	252	244	1.25	1.25
10 250	430	380	27	269.5	271.7	248.8	250	-	345	2	28	304	267.4	312	298	1.25	1.25
12 300	480	430	27	321.0	322.8	297.9	300	-	395	3	30	354	318.5	364	352	1.25	1.25
14 350	540	480	33	358.1	360.2	333.4	335	-	440	3	34	398	355.6	408	398	1.25	1.25
16 400	605	540	33	409	411.2	381.0	380	-	495	3	38	446	406.4	456	452	1.25	1.25
18 450	675	605	33	460	462.3	431.8	430	-	560	3	40	504	457.2	514	510	1.25	1.25
20 500	730	660	33	511	514.4	482.6	480	-	615	3	42	558	508.0	568	561	1.25	1.25

N B Size INS MM	T SOH SW, LJ	T TR	T WN	C LJ	r2 WN	NO. HOLES
3/8 10	16	16	31	-	4	4
1/2 15	16	16	32	3	4	4
3/4 20	20	20	34	3	4	4
1 25	20	20	36	3	4	4
1 1/4 32	22	22	39	4	5	4
1 1/2 40	24	24	39	4	5	4
2 50	24	24	40	4	5	8
2 1/2 65	26	27	46	5	5	8
3 80	28	30	49	5	6	8
3 1/2 90	30	-	50	5	6	8
4 100	34	36	56	5	6	8
5 125	34	40	60	6	6	8
6 150	38	40	69	6	6	12
8 200	40	-	73	6	6	12
10 250	44	-	81	6	6	12
12 300	48	-	88	9	8	16
14 350	52	-	104	9	8	16
16 400	60	-	115	9	10	16
18 450	64	-	126	9	10	20
20 500	68	-	128	9	10	20



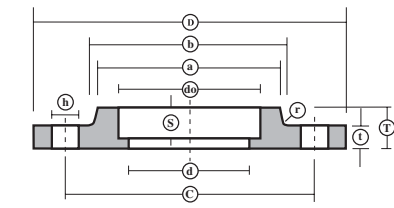
Dimensions of Flanges for Nominal Pressure 20K

N B Size INS MM	D	C	h	do SOH	do LJ	d2S SW WN	d IT	S SW	g SOH, SW, TR, WN, IT, BL	f SOH, SW, TR, WN, IT, BL	t EXCEPT FOR BL	t BL	a SOH, SW, LJ, TR	a WN	b SOH, SW, LJ, TR	b2 WN	x WN
3/8 10	90	65	15	17.8	-	12.7	10	10	46	1	14	14	30	17.3	32	29	1.25
1/2 15	95	70	15	22.2	23.4	16.1	15	10	51	1	14	14	34	21.7	36	34	1.25
3/4 20	100	75	15	27.7	28.9	21.4	20	13	56	1	16	16	40	27.2	42	39	1.25
1 25	125	90	19	34.5	35.6	27.2	25	13	67	1	16	16	48	34.0	50	47	1.25
1 1/4 32	135	100	19	43.2	44.3	35.5	32	13	76	2	18	18	56	42.7	60	56	1.25
1 1/2 40	140	105	19	49.1	50.4	41.2	40	13	81	2	18	18	62	48.6	66	62	1.25
2 50	155	120	19	61.1	62.7	52.7	50	16	96	2	18	18	76	60.5	80	75	1.25
2 1/2 65	175	140	19	77.1	78.7	65.9	65	16	116	2	20	20	100	76.3	104	92	1.25
3 80	200	160	23	90.0	91.6	78.1	80	16	132	2	22	22	113	89.1	117	105	1.25
3 1/2 90	210	170	23	102.6	104.1	90.2	90	-	145	2	24	24	126	101.6	130	118	1.25
4 100	225	185	23	115.4	116.9	102.3	100	-	160	2	24	24	138	114.3	142	134	1.25
5 125	270	225	25	141.2	143.0	126.6	125	-	195	2	26	26	166	139.8	172	162	1.25
6 150	305	260	25	166.6	168.4	151.0	150	-	230	2	28	28	196	165.2	202	192	1.25
8 200	350	305	25	218.0	219.5	199.9	200	-	275	2	30	30	244	216.3	252	244	1.25
10 250	430	380	27	269.5	271.7	248.8	250	-	345	2	34	34	304	267.4	312	298	1.25
12 300	480	430	27	321.0	322.8	297.9	300	-	395	3	36	36	354	318.5	364	352	1.25
14 350	540	480	33	358.1	360.2	333.4	335	-	440	3	40	40	398	355.6	408	398	1.25
16 400	605	540	33	409	411.2	381.0	380	-	495	3	46	46	446	406.4	456	452	1.25
18 450	675	605	33	460	462.3	431.8	430	-	560	3	48	48	504	457.2	514	510	1.25
20 500	730	660	33	511	514.4	482.6	480	-	615	3	50	50	558	508.0	568	561	1.25

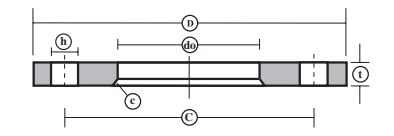
Dimensions of Flanges for Nominal Pressure 30K

N B Size INS MM	D	C	H	do SOH	d2S SOH, WN	d IT	g SOH, SW, TR, WN, IT, BL	f SOH, WN, IT, BL	t SOH, WN, IT, BL	a SOH	a WN	b SOH	b2 WN	x WN	x IT	T SOH	T WN
3/8 10	110	75	19	17.8	-	-	52	1	16	30	-	34	-	-	24	-	-
1/2 15	115	80	19	22.2	16.1	15	55	1	18	36	21.7	40	40	1.25	1.25	26	45
3/4 20	120	85	19	27.7	21.4	20	60	1	18	42	27.2	46	44	1.25	1.25	28	45
1 25	130	95	19	34.5	27.2	25	70	1	20	50	34.0	54	52	1.25	1.25	30	48
1 1/4 32	140	105	19	43.2	35.5	32	80	2	22	60	42.7	64	62	1.25	1.25	32	52
1 1/2 40	160	120	23	49.1	41.2	40	90	2	22	66	48.6	70	70	1.25	1.25	34	54
2 50	165	130	19	61.1	52.7	50	105	2	22	82	60.5	86	84	1.25	1.25	36	57
2 1/2 65	200	160	23	77.1	65.9	65	130	2	26	102	76.3	106	104	1.25	1.25	40	69
3 80	210	170	23	90.0	78.1	80	140	2	28	115	89.1	121	118	1.25	1.25	44	73
3 1/2 90	230	185	25	102.6	90.2	90	150	2	30	128	101.6	134	130	1.25	1.25	46	74
4 100	240	195	25	115.4	102.3	100	160	2	32	141	114.3	147	142	1.25	1.25	48	76
5 125	275	230	25	141.2	126.6	125	195	2	36	166	139.8	172	172	1.25	1.25	54	86
6 150	325	275	27	166.6	151.0	150	235	2	38	196	165.2	204	202	1.25	1.25	58	95
8 200	370	320	27	218.0	199.9	200	280	2	42	248	216.3	256	254	1.25	1.25	64	102
10 250	450	390	33	269.5	248.8	250	345	2	48	306	267.4	314	312	1.25	1.25	72	118
12 300	515	450	33	321.0	297.9	300	405	3	52	360	318.5	370	366	1.25	1.25	78	127
14 350	560	495	33	358.1	333.4	335	450	3	54	402	355.6	412	406	1.25	1.25	84	134
16 400	630	560	39	409	381.0	380	510	3	60	456	406.4	468	462	1.25	1.25	92	149

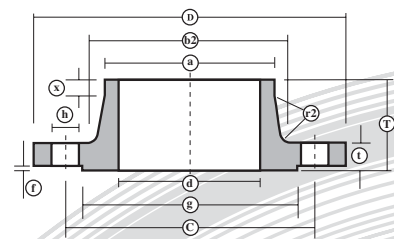
N B Size INS MM	x IT	T SOH, SW, LJ, TR	T WN	C, (27) LJ	r2 WN	NO. HOLES
3/8 10	1.25	20	33	-	4	4
1/2 15	1.25	20	34	3	4	4
3/4 20	1.25	22	36	3	4	4
1 25	1.25	24	38	3	4	4
1 1/4 32	1.25	26	41	4	5	4
1 1/2 40	1.25	26	41	4	5	4
2 50	1.25	26	42	4	5	8
2 1/2 65	1.25	30	48	5	5	8
3 80	1.25	34	51	5	6	8
3 1/2 90	1.25	36	54	5	6	8
4 100	1.25	36	58	5	6	8
5 125	1.25	40	64	6	6	8
6 150	1.25	42	73	6	6	12
8 200	1.25	46	77	6	6	12
10 250	1.25	52	87	6	6	12
12 300	1.25	56	94	9	8	16
14 350	1.25	62	110	9	8	16
16 400	1.25	70	123	9	10	16
18 450	1.25	78	134	9	10	20
20 500	1.25	84	136	9	10	20



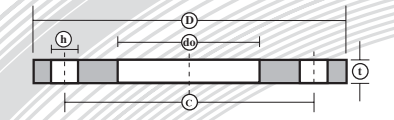
SW  
nominal  
size 10A  
to 80A



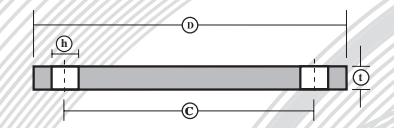
LJ  
nominal  
size 15A  
to 400A



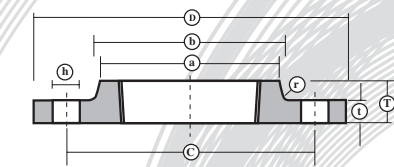
WN  
nominal  
size 10A  
to 1500A



SOP  
nominal  
size 10A  
to 1500A



BL  
nominal  
size 10A  
to 1500A



TR  
nominal  
size 10A  
to 150A

Bossed type Slip On  
Flanges are specified in  
JIS from size 450A to  
1500A

N B Size INS MM	R SOH	r2 WN	NO. HOLES
3/8 10	4	-	4
1/2 15	5	6	4
3/4 20	5	6	4
1 25	5	6	4
1 1/4 32	6	6	4
1 1/2 40	6	6	4
2 50	6	8	8
2 1/2 65	8	8	8
3 80	8	8	8
3 1/2 90	8	8	8
4 100	8	8	8
5 125	8	10	8
6 150	8	10	12
8 200	8	10	12
10 250	8	10	12
12 300	10	15	16
14 350	12	15	16
16 400	15	20	16

Address: Evenort Ltd  
Houghton Road  
North Anston Trading Estate  
Sheffield  
S25 4JJ

Tel: 01909 569361  
Fax: 01909 550631

E-mail: [sales@evenort.co.uk](mailto:sales@evenort.co.uk)  
Web: [www.evenort.co.uk](http://www.evenort.co.uk)

Evenort Ltd are  
official agents for:  
Hilton Metal Forgings Ltd  
701 Palm Spring  
Link Road  
Malad (West)  
Mumbai 400 064  
India

[www.hmfl.co.in](http://www.hmfl.co.in)

